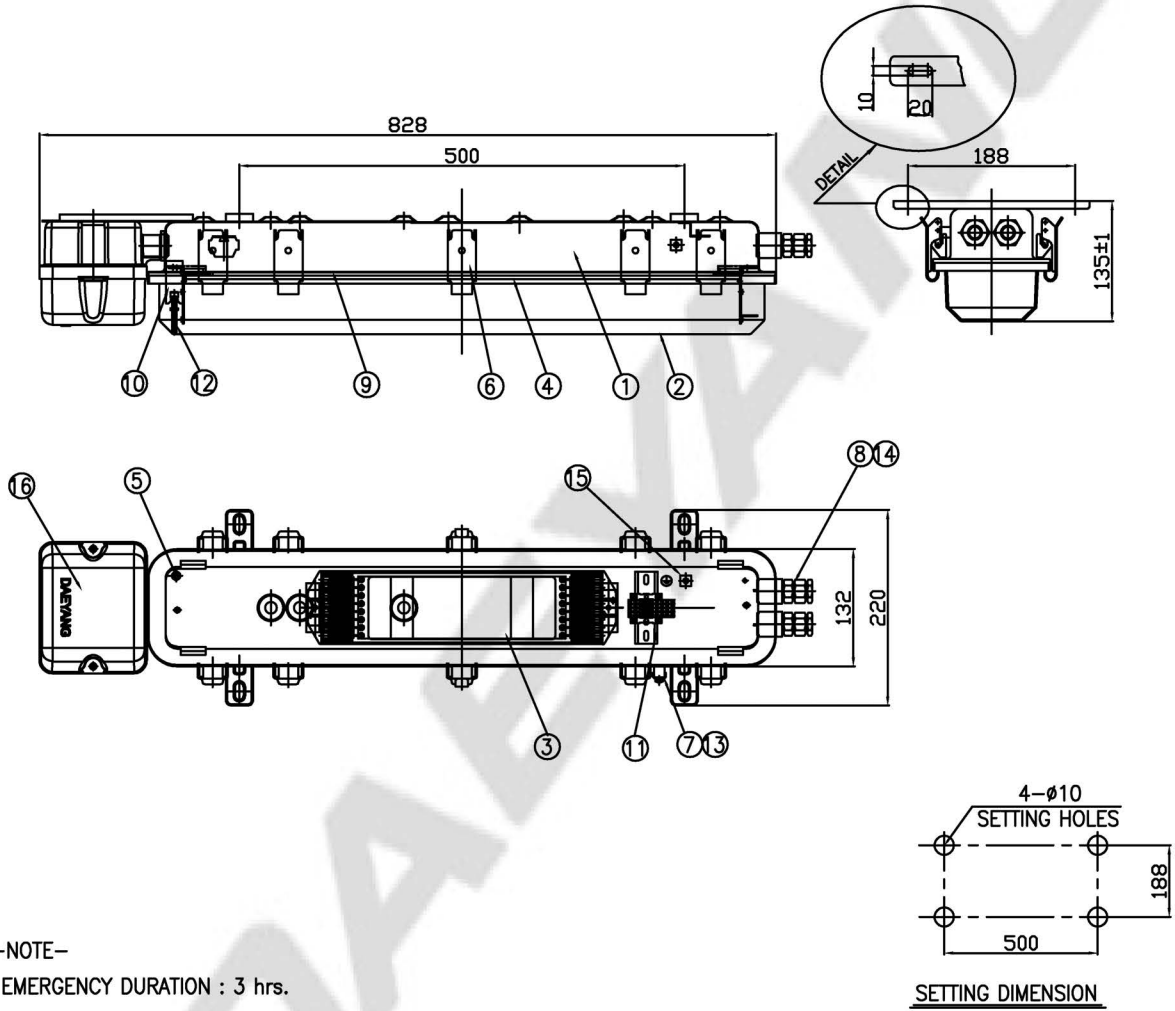


CAPACITY	SYMBOL/ SERIAL NO.	CIRCUIT DIAGRAM
AC100V-240V , 50/60Hz		
12.5W x 2		



16	BATTERY CASE	-	1		8	GLAND HUB	STAINLESS STEEL 316L	2	
15	INSIDE EARTH BAR	STAINLESS STEEL 316L	1		7	OUTSIDE EARTH BAR	STAINLESS STEEL 316L	1	
14	CABLE GLAND(M20)	BRASS	2	E1FW-20s (ø10.5~ø15.5)	6	LATCH	STAINLESS STEEL 316L	10	
13	EARTH BOLT	BRASS	1		5	BATTERY CHARGE LED	-	1	
12	INTERLOCK SHAFT	BRASS	1		4	LED module	-	2	5,000K
11	TERMINAL BLOCK	-	1	CLAMPING 5P	3	EMERGENCY LED driver	-	1	
10	INTERLOCK SWITCH	-	1		2	GLOBE	POLYCARBONATE	1	
9	REFLECTOR	STEEL	1		1	BODY	STAINLESS STEEL 316L	1	
NO.	NAME OF PARTS	MATERIAL	Q'TY	REMARKS	NO.	NAME OF PARTS	MATERIAL	Q'TY	REMARKS

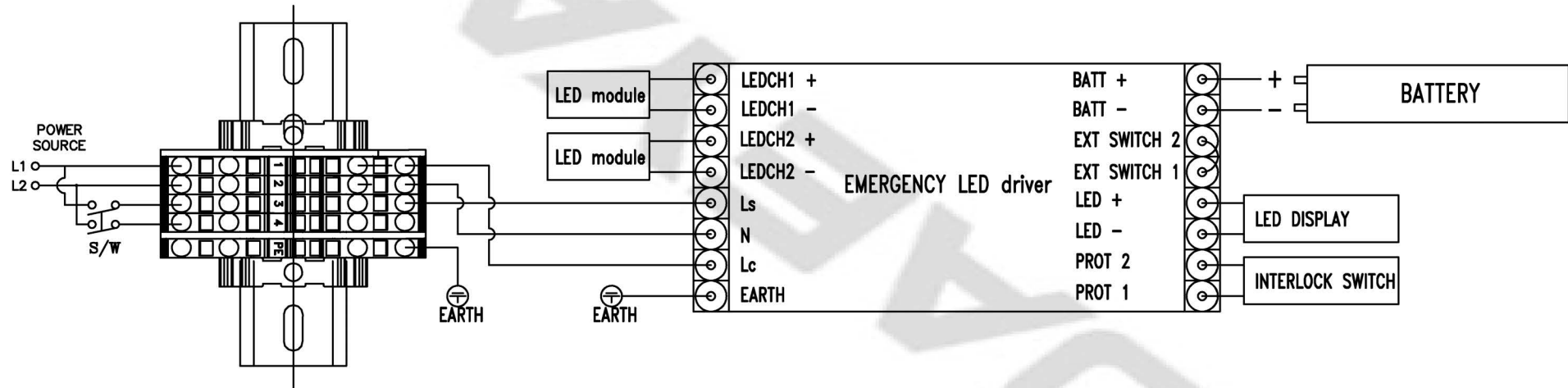
APPROVED	B. K. KIM	UNIT	MM	TITLE; INCREASED SAFETY LED CEILING LIGHT W/BATTERY BACKUP (Ex demb IIC T4 Gb) FOR MARINE USE			
CHECKED		SCALE	N/S				
DRAWING	B. I. KIM	COLOR	N-9.3				
DATE	2015.12.04	IP	67				
				MODEL NO.	EXLED-125edBu-550UWM20s2HC50	WEIGHT	7.8 Kg
				DWG NO.	L71170072	SHEET NO.	6

– NOTE –

\* INDICATION LAMP COLOR STATUS

NO	LED COLOR STATUS		MODE
	GREEN	RED	
1	Steady	–	Fully charged
2	Flash once per 2secs	–	Charging
3	–	Flash twice per 4secs	Battery defects
4	–	Flash once per 1secs	Discharging
5	–	Flash once per 4secs	EXT switch is open

NO	CONTENT	DATE	REVISER	APPROVAL
△				
△				
△				



CONNECTION DIAGRAM(1 LED driver 2 LED module)

– WARNING –

1. After LIGHTING is installed, please connect the inverter connector.
2. When the continuous power is not supplied, connector should be disconnected to avoid natural discharge of battery.

TITLE : EXLED-125edBu/EXLED-225edBu				SCALE	N/S	UNIT	MM	NO.	REVISED
Connection Diagram				PROJECT METHOD	☉	WEIGHT	KG	△	
				APPROVED	B. I. KIM			△	
				CHECKED				MATERIAL	–
				DRAWN	B. I. KIM			DWG NO.	EXLED-125edBu
				DATE	2015. 12. 04			SHEET NO.	6-A